

PLASTER FORM



SASSO



FLOOR Verde Naturale R9 Rett. 120x278 - 47^{1/4}"x109^{7/16}"
WALL Peonia, Botticino Naturale R9 Rett. 120x278 - 47^{1/4}"x109^{7/16}"



FLOOR Bianco Silktech R10 Rett. 120x120 - 47¹/₄"x47¹/₄"
WALL Calce Naturale R9 Rett. 120x278 - 47¹/₄"x109⁷/₁₆"
FURNITURE Calce, Bianco Naturale R9 Rett. 120x278 - 47¹/₄"x109⁷/₁₆"



FLOOR Rosso Naturale R9 Rett. 120x278 - 47^{1/4}"x109^{7/16}"
WALL Eden Silktech R10 Rett. 60x120 - 23^{5/8}"x47^{1/4}"
FURNITURE Noir, Calce Naturale R9 Rett. 120x278 - 47^{1/4}"x109^{7/16}"



WALL Calce Cardboard Silktech R10 Rett. 60x120 - 23^{5/8}"x47^{1/4}"
 FURNITURE Calce Naturale R9 Rett. 120x278 - 47^{1/4}"x109^{7/16}"



FLOOR Botticino Silktech R10 Rett. 60x120 - 23^{5/8}"x47^{1/4}" - Botticino Silktech Plus R11 Rett. 60x120 - 23^{5/8}"x47^{1/4}"
 WALL Rosso, Sabbia Naturale R9 Rett. 120x278 - 47^{1/4}"x109^{7/16}"
 FURNITURE Botticino, Rosso Naturale R9 Rett. 120x278 - 47^{1/4}"x109^{7/16}"



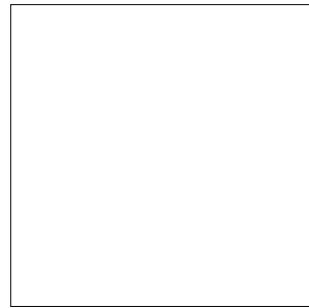
FLOOR Grigio Silktech R10 Rett. 60x120 - 23^{5/8}"x47^{1/4}"
WALL Eden Silktech R10 Rett. 60x120 - 23^{5/8}"x47^{1/4}"
Grigio Silktech R10 Rett. 60x120 - 47^{1/4}"x109^{7/16}"
FURNITURE Grigio Naturale R9 Rett. 120x278 - 23^{5/8}"x47^{1/4}"



PLASTER FORM

COLOURS AND SIZES

9,5 mm.



120x120 - 47^{1/4}"x47^{1/4}"

Silktech R10 Rett.

- Noir
- Basalto
- Calce
- Bianco
- Botticino
- Sabbia
- 7 Patterns



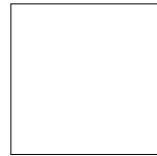
60x120 - 23^{5/8}"x47^{1/4}"

Silktech R10 Rett.

- Noir
- Basalto
- Grigio
- Calce
- Bianco
- Botticino
- Sabbia
- Verde
- Rosso
- Up to 14 Patterns

Silktech Plus R11 Rett.

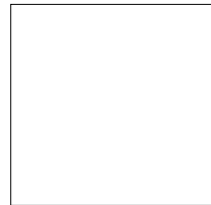
- Noir
- Basalto
- Calce
- Bianco
- Botticino
- Sabbia
- Up to 14 Patterns



60x60 - 23^{5/8}"x23^{5/8}"

Silktech R10 Rett.

- Noir
- Basalto
- Calce
- Bianco
- Botticino
- Sabbia
- Up to 28 Patterns



80x80 - 31^{1/2}"x31^{1/2}"

Silktech R10 Rett.

- Noir
- Basalto
- Calce
- Bianco
- Botticino
- Sabbia
- Up to 17 Patterns



30x60 - 11^{13/16}"x23^{5/8}"

Silktech R10 Rett.

- Noir
- Basalto
- Calce
- Bianco
- Botticino
- Sabbia
- Up to 56 Patterns



The Silktech technology combines excellent anti-slip performances with a ceramic surface that's silky to the touch.

Laying with a 2 mm-joint is recommended.
Check the colour matching between different sizes.

MOSAICO 5x5*

Tessere - Chip 4,8x4,8 - 1^{7/8}"x1^{7/8}"



30x30 - 11^{13/16}"x11^{13/16}"

Silktech R10

- Noir
- Basalto
- Grigio
- Calce
- Bianco
- Botticino
- Sabbia
- Verde
- Rosso

* On fibre mesh backing



PLASTER FORM

DECORS

9,5 mm.



EDEN

60x120 - 23^{5/8}"x47^{1/4}"

Silktech R10 Rett.

Eden (3 patterns random)



POP ART

60x120 - 23^{5/8}"x47^{1/4}"

Silktech R10 Rett.

Pop Art (6 patterns random)



60x120 - 23^{5/8}"x47^{1/4}"

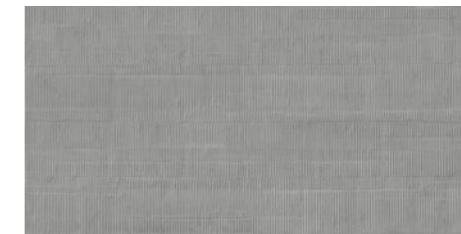
Silktech R10 Rett.

Noir

30x60 - 11^{13/16}"x23^{5/8}"

Silktech R10 Rett.

Noir



60x120 - 23^{5/8}"x47^{1/4}"

Silktech R10 Rett.

Basalto

30x60 - 11^{13/16}"x23^{5/8}"

Silktech R10 Rett.

Basalto

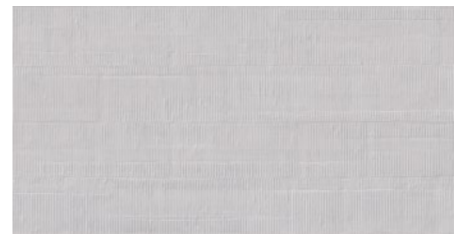


CARDBOARD

60x120 - 23^{5/8}"x47^{1/4}"

Silktech R10 Rett.

Grigio



60x120 - 23^{5/8}"x47^{1/4}"

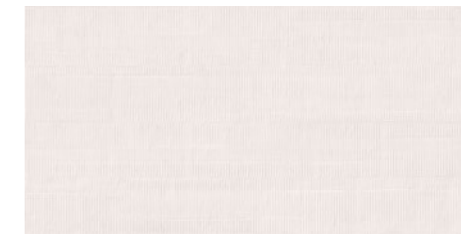
Silktech R10 Rett.

Calce

30x60 - 11^{13/16}"x23^{5/8}"

Silktech R10 Rett.

Calce



60x120 - 23^{5/8}"x47^{1/4}"

Silktech R10 Rett.

Bianco

30x60 - 11^{13/16}"x23^{5/8}"

Silktech R10 Rett.

Bianco



60x120 - 23^{5/8}"x47^{1/4}"

Silktech R10 Rett.

Botticino

30x60 - 11^{13/16}"x23^{5/8}"

Silktech R10 Rett.

Botticino



60x120 - 23^{5/8}"x47^{1/4}"

Silktech R10 Rett.

Sabbia

30x60 - 11^{13/16}"x23^{5/8}"

Silktech R10 Rett.

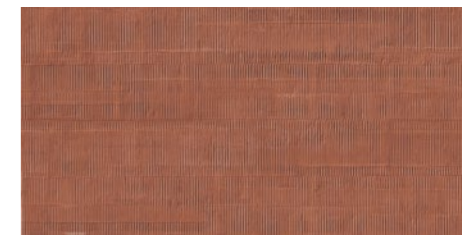
Sabbia



60x120 - 23^{5/8}"x47^{1/4}"

Silktech R10 Rett.

Verde



60x120 - 23^{5/8}"x47^{1/4}"

Silktech R10 Rett.

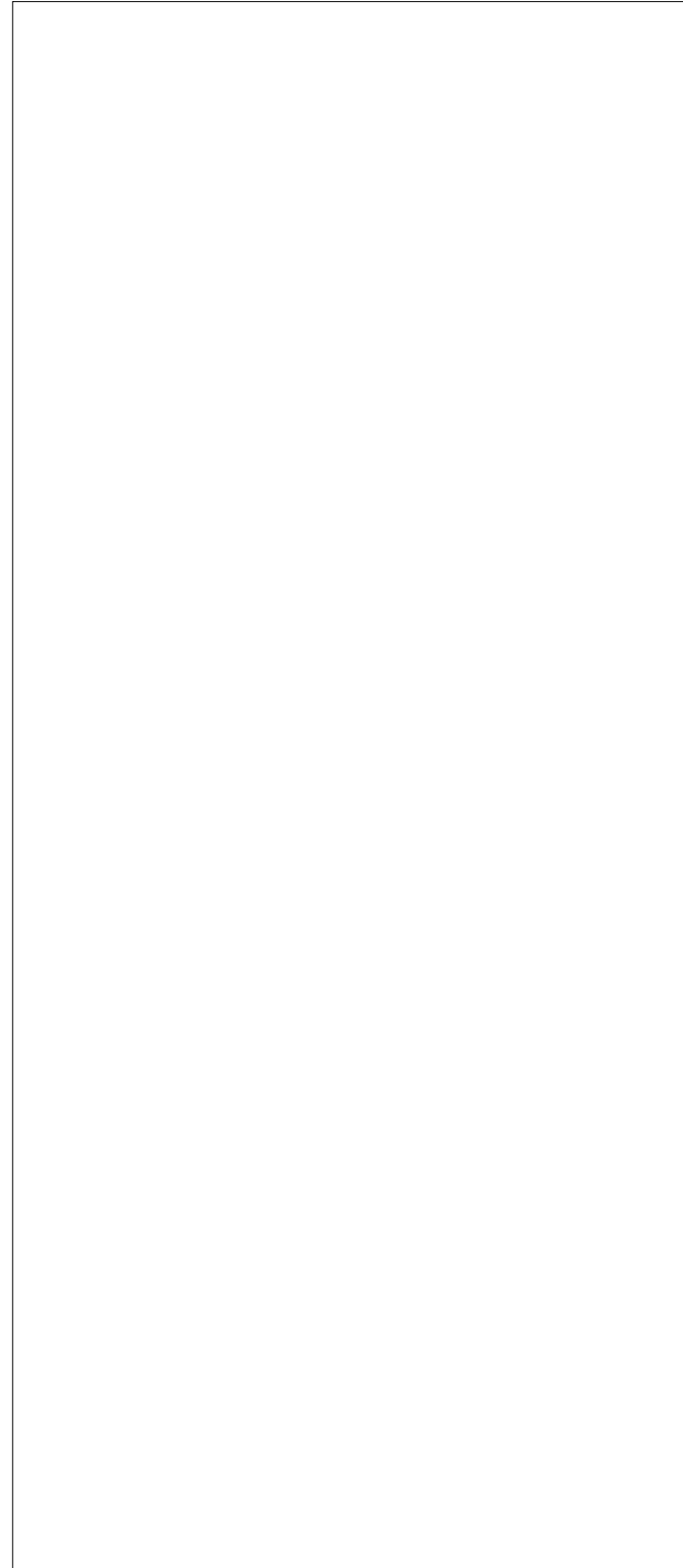
Rosso



PLASTER FORM

COLOURS AND SIZES

6,5 mm.



120x278 - 47^{1/4}x109^{7/16}"

Naturale R9 Rett.

5 Patterns



Noir
5 Patterns

Grigio
5 Patterns

Calce
5 Patterns

Bianco
5 Patterns

Botticino
5 Patterns

Sabbia
5 Patterns

Verde
5 Patterns

Rosso
5 Patterns



PLASTER FORM

DECORS

6,5 mm.

CARIOCA



120x278 - 47^{1/4}x109^{7/16}"

Naturale R9 Rett.

Carioca A



120x278 - 47^{1/4}x109^{7/16}"

Naturale R9 Rett.

Carioca B

If 2 or more slabs of the **Carioca Decor** are ordered, **Carioca A** must always be combined with **Carioca B** to maintain the pattern's continuity (e.g. if 3 slabs are purchased, install A+B+A or B+A+B so the pattern will be continuous)



PLASTER FORM

DECORS

6,5 mm.

PEONIA



120x278 - 47^{1/4}x109^{7/16}"

Naturale R9 Rett.

Peonia A

120x278 - 47^{1/4}x109^{7/16}"

Naturale R9 Rett.

Peonia B

If 2 or more slabs of the **Peonia Decor** are ordered, **Peonia A** must always be combined with **Peonia B** to maintain the pattern's continuity (e.g. if 3 slabs are purchased, install A+B+A or B+A+B so the pattern will be continuous)



PLASTER FORM

TRIMS

	Size	Noir	Grigio Basalto	Grigio Avio	Grigio Cenere	Bianco	Botticino	Sabbia	Verde Salvia	Rosso
	Silktech R10 Rett. 7x60 - 2 ^{3/4} x23 ^{5/8} " Pcs. Box 15 - LM x Box 9,00	•	•	•	•	•	•	•	•	•
	Silktech R10 Rett. 4,6x120 - 1 ^{15/16} x47 ^{1/4} " Pcs. Box 6 - LM x Box 7,20	•	•	•	•	•	•	•	•	•
	Silktech R10 Rett. 33x120 - 12 ^{15/16} x47 ^{1/4} " Pcs. Box 2 - LM x Box 2,40	•	•	•	•	•	•	•	•	•
	Silktech R10 Rett. 33x120x3,2x3,2 - 12 ^{15/16} x47 ^{1/4} x1 ^{1/4} x1 ^{1/4} " Pcs. Box 2 - LM x Box 2,40	•	•	•	•	•	•	•	•	•
	Silktech R10 Rett. 33x120x3,2x3,2 - 12 ^{15/16} x47 ^{1/4} x1 ^{1/4} x1 ^{1/4} " Pcs. Box 1 - LM x Box 1,20	Right	Right	Right	Right	Right	Right	Right	Right	Right
		Left	Left	Left	Left	Left	Left	Left	Left	Left

Trims within the scope of EN 14411:2016 have the same surface characteristics as the relative plain tiles.

PACKING AND WEIGHT

Size cm	Thickness mm	Pieces x Sqm	Pieces x Box	Sqm x Box	Weight x Box Kg	Boxes x Pal.	Sqm x Pal.	Weight x Pal. Kg
120x278 Naturale R9	6,5	0,30	1	3,336	50,04			
120x278 Dec. Peonia Naturale R9	6,5	0,30	1	3,336	50,04		vedi sotto - see below	
120x278 Dec. Carioca Naturale R9	6,5	0,30	1	3,336	50,04			
120x120 Silktech R10	9,5	0,69	1	1,440	31,68	36	51,84	1140
80x80 Silktech R10	9,5	1,56	2	1,280	28,16	42	53,76	1183
60x120 Silktech R10 - Silktech Plus R11	9,5	1,39	2	1,440	31,68	36	51,84	1140
60x60 Silktech R10	9,5	2,78	3	1,080	23,76	40	43,20	950
30x60 Silktech R10	9,5	5,56	6	1,080	23,76	48	51,84	1140
60x120 Dec. Eden Silktech R10	9,5	1,39	2	1,440	31,68	36	51,84	1140
60x120 Dec. Pop Art Silktech R10	9,5	1,39	2	1,440	31,68	36	51,84	1140
60x120 Dec. Cardboard Silktech R10	9,5	1,39	2	1,440	31,68	36	51,84	1140
30x60 Dec. Cardboard Silktech R10	9,5	5,56	6	1,080	23,76	48	51,84	1140
30x30 Mosaico 5X5 Silktech R10	9,5	11,11	5	0,450	8,73	60	27,00	524

Slabs 120x278

Item	Size cm	No. of Slabs	Sqm per Pack	Weight of Packaging Kg	Weight of Packaging + Slabs Kg
	137x292x29h	5	16,68	107	357,20
	137x292x42h	18	60,05	145	1045,72
	75x290x160h	40	133,44	180	2181,60



PLASTER FORM

Porcelain Tiles
ISO 13006 Annex G - UNI EN 14411 Annex G - Bla UGL
ANSI A137.1 - CLASS P1



TECHNICAL FEATURES

STANDARD

VALUE

	WATER ABSORPTION	UNI EN ISO 10545/3	Conforme		
		ASTM C373	Compliant		
	MODULUS OF RUPTURE	SPESSORE	6,5 mm	9,5 mm	
		UNI EN ISO 10545/4	≥ 35 N/mm ²	≥ 45 N/mm ²	
	BREAKING STRENGTH	UNI EN ISO 10545/4	≥ 700 N	≥ 2000 N	
		ASTM C648	≥ 175 lbf	≥ 400 lbf	
	FROST RESISTANCE	UNI EN ISO 10545/12	Conforme		
		ASTM C1026	Unaffected		
	CHEMICAL RESISTANCE TO HIGH AND LOW ACID AND BASIC CONCENTRATIONS	UNI EN ISO 10545/13	A - LA - HA		
		ASTM C-650	Unaffected		
	STAIN RESISTANCE	UNI EN ISO 10545/14	5		
		ASTM C1378	Class A		
	SLIP RESISTANCE		NATURALE	SILKTECH	SILKTECH PLUS
		DIN EN 16165 Annex B	R9	R10	R11
		DIN EN 16165 Annex A	-	B (A+B)	B (A+B)
		ANSI A326.3:2017 DCOF	WET ≥ 0,42	WET ≥ 0,50	WET ≥ 0,65
		B.C.R.A. D.M. N. 236 14/6/89	> 0,40	> 0,40	> 0,40
		AS 4586-2013 Anexo A	-	P3	P4
		PENDOLO BS 7976 BSEN13036-4: 2011 Pendulum testers	-	> 36 Low Slip potential	> 36 Low Slip potential
		UNE 41901:2017 EX DB SUA (actual)	-	2	3



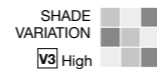
PRODUCT CERTIFIED FOR LOW CHEMICAL EMISSIONS: UL COM/CC UL 2818



放射性水平A类



15% 9,5 mm
0% 6,5 mm
average values



V3 High

Colours and optical features of the materials illustrated in this catalogue are to be regarded as mere indications. Product sizes indicated are nominal and like weights and colours undergo the typical variations of the ceramic process. The manufacturer reserves the right to change the technical and optical features of the materials illustrated at any time and without notice. These features are not legally binding.

SURFACE STATEMENTS

www.surfacestatements.com





PLASTER FORM

SASSO